

Trail-Cruiser

BY R-VISION

The Nation's #1
Selling Ultra-Lite!

8' Wide Xtra
Lite-Weight
Travel Trailers,
Expandable
Travel Trailers
& Fifth Wheels



*Laminated Fiberglass with
Aluminum Framing*



Whoever said you had to sacrifice living space in a light-weight towable has never seen the Trail-Cruiser from R-Vision.

The rear bunkhouse on this unit features 2 - 31" bunks. Overall, this unit will comfortably sleep a family of 6. There's even a nice sized bathroom in this unit featuring a tub/shower combo and sink base.



Model TC280BH



Model TC280BH

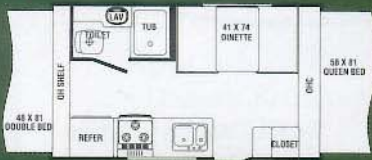


Model TC527RL

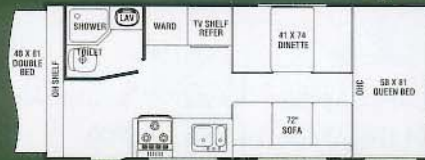
Luxurious Living

The Trail-Cruiser kitchen offers more than enough room for all your meal preparation needs. The large windows of the Trail-Cruiser feature brushed metal mini-blinds for an added touch. This model features an optional microwave and oven with brushed metal appearance. Across from the sink is the refrigerator and a nice sized pantry storage.

Expandable Floor Plans



C17



C230FS



C26BH

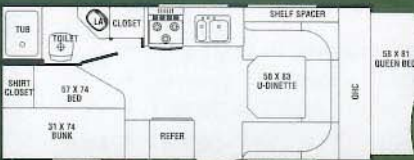
Utility Storage Door



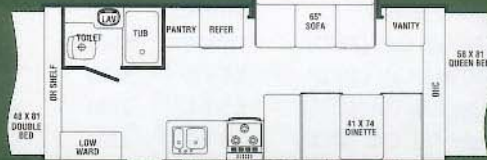
C19



C23B



C21RBH



C23S

Utility Storage Door

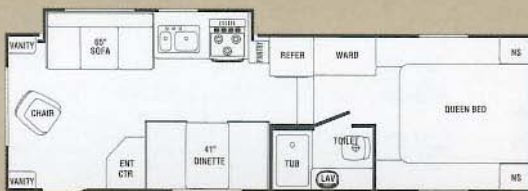
	C17	C19	C21RBH	C230FS	C23B	C23S	C26BH
Length (Closed)	17'10"	20'8"	22'5"	24'6"	24'4"	24'7"	27'
Length (Open)	20'10"	23'8"	25'5"	27'6"	27'4"	27'7"	30'
Width (w/o Awning)	96"	96"	96"	96"	96"	96"	96"
Height (w/AC)	9'8"	9'8"	9'8"	9'8"	9'8"	9'8"	9'8"
Awning Length	10'	12'	13'	15'	15'	15'	17'
Load Cap.	1162	2428	2452	1942	1898	1604	1854
*Hitch Dry Wt. (Appr.)	255	279	385	341	238	334	472
*Axle Dry Wt. (Appr.)	2338	2572	2548	3058	3102	3396	3146
*Total Dry Wt.	2593	2851	2933	3399	3340	3730	3618
GVWR	3755	5279	5385	5341	5238	5334	5472
Fresh Water Tank Cap.	30	30	30	30	30	30	30
Grey Water Cap.	30	30	30	30	30	30	30
Black Water Cap.	30	30	30	30	30	30	30
Tire Size	205/75R14	205/75R14	205/75R14	205/75R14	205/75R14	205/75R14	205/75R14

*Weights are approximate and based on standard features, optional equipment not included.

▲ Utility Storage Door

▼ Pass-Thru Storage

Fifth Wheel Floor Plan



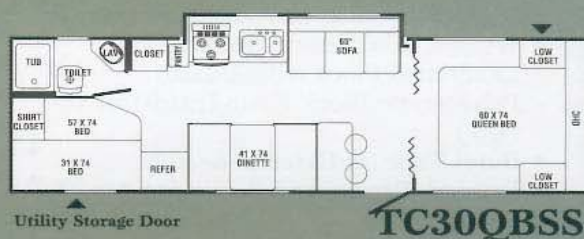
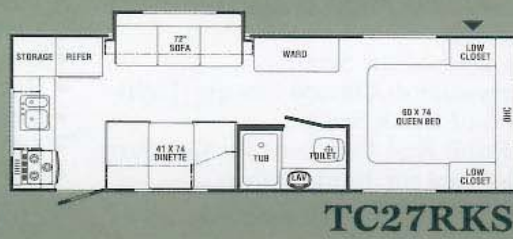
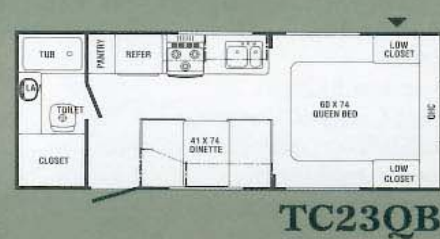
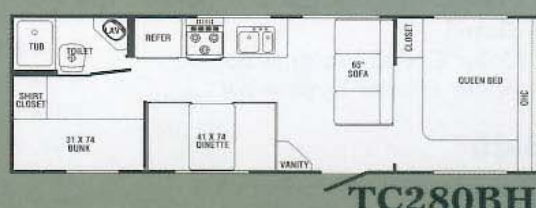
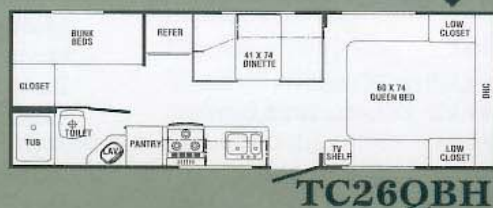
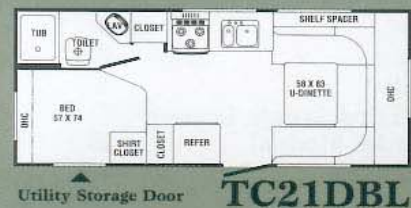
TC527RL

527RL

Length	28'
Width (w/o Awning)	96"
Height	11'6"
Awning Length	17'
Load Cap.	2656
*Hitch Dry Wt. (Appr.)	1059
*Axle Dry Wt. (Appr.)	4354
*Total Dry Wt.	5413
GVWR	8059
Fresh Water Tank Cap.	30
Grey Water Cap.	30
Black Water Cap.	30
Tire Size	205/75R14

*Weights are approximate and based on standard features, optional equipment not included.

Hard Wall Floor Plans



▲ Utility Storage Door

▼ Pass-Thru Storage

	TC19RDB	TC21DBL	TC21RBH	TC23QB	TC263S	TC26QBH	TC26QBS	TC27RKS	TC27RSL	TC280BH	TC306S	TC30QBSS
Length	21'2"	22'5"	22'5"	23'11"	27'1"	26'11"	26'11"	28'2"	28'2"	N/A	31'8"	31'7"
Width (w/o Awning)	96"	96"	96"	96"	96"	96"	96"	96"	96"	96"	96"	96"
Height (w/AC)	9'8"	9'8"	9'8"	9'8"	9'8"	9'8"	9'8"	9'8"	9'8"	9'8"	9'8"	9'8"
Awning Length	13'	13'	13'	14'	18'	18'	18'	18'	18'	18'	20"	18'
Load Cap.	2590	2378	2508	2170	2182	2044	1940	1732	2033	N/A	1584	1588
*Hitch Dry Wt. (Appr.)	346	370	375	203	381	373	361	324	478	N/A	576	277
*Axle Dry Wt. (Appr.)	2410	2622	2492	2830	3418	2956	3060	3268	2967	N/A	4016	4012
*Total Dry Wt.	2756	2992	2867	3033	3799	3329	3421	3592	3445	N/A	4592	4289
GVWR	5346	5370	5375	5203	5981	5373	5361	5324	5478	N/A	6176	5877
Fresh Water Tank Cap.	30	30	30	30	30	30	30	30	30	30	30	30
Grey Water Cap.	30	30	30	30	30	30	30	30	30	30	30	30
Black Water Cap.	30	30	30	30	30	30	30	30	30	30	30	30
Tire Size	205/75R14	205/75R14	205/75R14	205/75R14	205/75R14	205/75R14	205/75R14	205/75R14	205/75R14	205/75R14	205/75R14	205/75R14

*Weights are approximate and based on standard features, optional equipment not included.

Specifications

Appliances/Equipment

- Dometic Refrigerator, Flush Mount
- 3 Burner Range Top
- Power Range Hood w/Light
- Six Gallon Gas Water Heater
- 20,000 BTU Furnace
- Air Conditioner Ready
- Demand Water Pump
- Laminated Countertops
- Double Bowl Kitchen Sink
- Copper LP Gas Lines - Double Flared
- Color Coded Water Lines
- Water Heater Bypass Kit

Bath

- ABS Tub or Shower Pan
- Shower Curtain w/Tieback
- Thetford Toilet
- Power Roof Vent
- Adjustable Shower Head
- Sink and Faucet
- Medicine Cabinet w/Mirror

Construction

- Welded, Aluminum Framed, Laminated Roof with 1-1/2" Polystyrene Block Foam Insulation (R-7), Rubber Roof
- Welded, Aluminum Framed, Laminated Walls with 1-1/2" Polystyrene Block Foam Insulation (R-7), Fiberglass Exterior Covering
- Welded, Aluminum Framed, Laminated Floor with 1-1/2" Polystyrene Block Foam Insulation (R-7)
- Butyl Tape on Exterior Seams
- Framed, Braced and Wired for Air Conditioning
- Rotocast Holding Tanks
- Rotocast Fresh Water Tank

Electrical

- Patio Light w/Amber Lens
- Ceiling Lights
- 120 Volt GFI Protected Circuit(s)
- 120 Volt Breaker Panel
- Outside 120 Volt Receptacle
- 30 Amp, 28' Power Cord (Detachable)
- 55 Amp Converter w/Charger
- Battery Rack
- Pre-Wired for Air Conditioner
- Pre-Wired for Microwave

Exterior

- Rubber Roof w/12 Year Warranty
- Fiberglass Skin w/2 Year Warranty
- Clean Bond Painted Chassis

- Radius Tinted Windows
- Flush Mounted Front Window Awning
- Radius Entry Door w/Window, Deadbolt Lock and Screen Door
- Outside Storage Compartment
- Self-Storing Step
- 20# LP Tanks with Cover
- 2-5/16" Coupler
- Utility Door Corner Beds
- Radius Baggage Door

Interior

- Large Galley Window
- Reversible Dinette and Bunk Cushions
- Valances
- Mini Blinds
- No-Wax Vinyl Flooring
- Maple Framed Mortise and Tenon Cabinet Doors
- Roof Vent in Living Area (Deleted w/Optional Air Conditioning Some Models)
- Power Roof Vent in Bath
- Inside - Outside Table (TC21RBH, TC21DBL, TC21RBH)

Bed Ends

- Weathershield Tent (Attached Inside C-channel to Prevent Water Entry)
- Continuous Piano Hinge for Added Strength
- Key Locked for Security
- Compression Clamps Ensure Tight Bond of Bunk Seals
- 6" Bunk End Cushions for Comfort
- Pre-wired for Bunk Lights

Running Gear

- 14" Radial Trailer Tires
- White Spoked Wheels
- Tandem Axles
- 10" Electric Brakes, All Wheels
- Galvanized Wheel Wells
- Torsion Bar Rubberized Independent Suspension System
- E-Z Lube Hubs

Safety

- Electric Jacks 5th Wheel
- Break-A-Way Switch
- Fire Extinguisher
- Smoke Detector
- LP Detector
- Safety Chains
- Ground Fault Protected Circuit(s)
- Dead Bolt Door Lock
- Triple Entry Step (FW Only)

Options

	Approx. Wt. (lbs.)
Air Conditioning, 13,000 BTU	104
Awning, A & E	40-60
Spare Tire, Wheel & Carrier	35
Stabilizer Jacks (4) (STD in XP)	24
TV Antenna/Cable	6
Outside Grill	15
AM/FM CD Player	4
Microwave	30
Oven	30
Roof Ladder	5
Outside Sliding Storage Drawer (N.A. in 19' Models)	36
Outside Shower	3
D.S.I. Water Heater	1
2 Door Refrigerator (Models 22' and Above)	17
Sink Cover	1
Stove Cover	1
Monitor Panel (STD in TT)	1
Tub Surround	10
Fan-Tastic Fan	15
2 Bar Stools	20
Power Jacks (FW Only)	7
Double Step Entry	

General Warranty Information

• Rubber Roof	12 Years
• Fiberglass Skin	2 Years
• Clean Bond Painted Chassis	1 Year
• Structure	2 Years
• Suspension System	5 Years
• General Camper Coverage	1 Year
• Liftco Slideout Mechanism	5 Years
• Atwood Appliances	2 Years
• Dometic Appliances	3 Years
• Weathershield Tent	5 Years



Towing Guide



VEHICLE	ENGINE	TOW LIMIT						
Acura			Ram (2WD) 1500 All Cab.	4.7 V-8	7400	Lincoln		
MDX	3.5 V-6	4500	Ram (2WD) 1500 All Cab.	5.9 V-8	8350	Blackwood	5.4 V-8	8700
RL	3.5 V-6	2000	Ram Wagon B1500	3.9 V-6	4050	Navigator	5.4 V-8	8800
AM General			Ram Wagon B2500	5.2 V-8	7700	Mazda		
Hummer (2-passenger)	Diesel	8510	Ford			B3000	3.0 V-6	4000
Hummer (2-passenger)	Turbodiesel	8440	Econoline Van	4.2 V-6	5000	B3000 (4WD)	3.0 V-6	4360
Buick			Econoline Van	4.6 V-8	6400	B4000	4.0 V-6	5900
Rendezvous	3.4 V-6	3500	Econoline Van	5.4 V-8	6800	B4000 (4WD)	4.0 V-6	5700
BMW			Expedition (4WD)	4.6 V-8	6000	Tribute	3.0 V-6	3500
X5	4.6 V-8	6000	Expedition (2WD)	5.4 V-8	8200	Mercedes-Benz		
X5	3.0 I-6	6000	Expedition (4WD)	5.4 V-8	7900	G-500	5.0 V-8	7000
Cadillac			Explorer (2WD)	4.0 V-6	5900	ML 320	3.2 V-6	5000
Escalade AWD	6.0 V-8	8200	Explorer (4WD)	4.0 V-6	5500	ML 430	4.3 V-8	5000
Chevrolet/GMC			F-150 Reg. Cab. (2WD)	4.2 V-6	6500	ML5AMG	5.5 V-8	5000
Astro/Safari (AWD)	4.3 V-6	5100	F-150 Reg. Cab. (2WD)	4.6 V-8	6500	Mercury		
Astro/Safari (RWD)	4.3 V-6	5800	Ranger Reg. Cab. (2WD)	2.3 I-4	2240	Mountaineer	4.0 V-6	5460
Blazer/Jimmy (2WD)	4.3 V-6	5500	Ranger Reg. Cab. (4WD)	3.0 V-6	2360	Mountaineer	4.6 V-8	7300
Express/Savana/G1500	4.3 V-6	5200	Ranger Reg. Cab. (2WD)	4.0 V-6	3560	Villager	3.3 V-6	3500
Express/Savana/G1500	5.0 V-8	5600	Windstar	3.8 V-6	3500	Mitsubishi		
Express/Savana/G1500	5.7 V-8	6100	Honda			Montero Limited, XLS	3.5 V-6	5000
Express/Savana/G2500	5.0 V-8	5400	Passport	3.2 V-6	4500	Montero Sport ES, LS	3.0 V-6	5000
Express/Savana/ G2500/3500	5.0 V-8	7900	Odyssey	3.5 V-6	3500	Montero Sport XLS, Limited	3.5 V-6	5000
K1500 Reg/Ext. Cab. (4WD)	4.8 V-6	8000	Hyundai			Nissan		
S Series/Sonoma	4.3 V-6	6000	Santa Fe (2WD)	2.7 V-6	2700	Pathfinder	3.5 V-6	5000
Silverado/Sierra/C/K 1500	4.3 V-6	5200	Santa Fe (4WD)	2.7 V-6	2200	Frontier	2.4 I-4	3500
Chrysler			Isuzu			Xterra	3.3 V-6	5000
Town & Country	3.3, 3.8 V-6	3800	Rodeo/Rodeo Sport	2.2, 2.6 I-4	2500	Quest	3.3 V-6	3500
Dodge			Rodeo	3.2 V-6	4500	Oldsmobile		
Caravan	3.3, 3.8 V-6	3800	Trooper	3.5 V-6	5000	Bravada	4.2 I-6	6300
Caravan	3.8 V-6	3500	Axiom	3.5 V-6	4500	Silhouette	3.4 V-6	3500
Dakota (2WD) Reg. Cab.	2.5 I-4	2200	Jeep			Pontiac		
Dakota (2WD) Reg. Cab.	3.9 V-6	5400	Grand Cherokee	4.0 I-6	5000	Aztec	3.4 V-6	3500
Dakota (2WD) Reg. Cab.	4.7 V-8	6650	Grand Cherokee	4.7 V-8	6500	Montana	3.4 V-6	3500
Dakota (2WD) Club Cab.	3.9 V-6	5150	Liberty	2.4 I-4	2000	Subaru		
Dakota (2WD) Club Cab.	4.7 V-8	6450	Liberty	3.7 V-6	5000	Legacy/Outback/ Forester	2.5 SOHC I-4	2000
Dakota (4WD) Reg. Cab.	3.9 V-6	5100	Wrangler	4.0 I-6	2000	Toyota		
Dakota (4WD) Reg. Cab.	4.7 V-8	6400	Kia			4 Runner	3.4 V-6	5000
Dakota (4WD) Club Cab.	3.9 V-6	4900	Sportage	2.0 I-4	2000	Land Cruiser	4.7 V-8	6500
Dakota (4WD) Club Cab.	4.7 V-8	6150	Land Rover			Sienna	3.0 V-6	3500
Durango (4WD)	4.7 V-8	5700	Discovery	All	5500	Tacoma	3.4 V-6	5000
Durango (4WD)	5.9 V-8	7300	Range Rover	All	6500	Tundra	4.7 V-8	7200
			Lexus					
			RX300	3.0 V-6	3500			
			LX470	4.7 V-8	6500			

Listed above are tow ratings that are the highest available for the respective 2002 models. Certain optional equipment may be required and other restrictions may apply. Check with your automotive dealer for exact specifications.

R-Vision, Inc.
2666 S. Country Club Drive
Warsaw, IN 46580
www.trail-lite.com

As R-Vision constantly strives to improve our product, all specifications listed in this informative brochure are subject to change without notice or obligation. Photos may show optional equipment which is not included in the purchase price of the unit. Test drive and review a current model on your dealer's lot today.

©2004 R-Vision, Inc.

R-100-062

Your Dealer