

Trail-Lite

North America's Favorite
Super Lite Weight
Travel Trailers

by R-Vison

Heated Enclosed Chassis



Travel Trailers and Fifth Wheels

"Why tow a heavier trailer"



SPECIAL FEATURES

SUPER LITE WEIGHT

Safe, Easy, Fuel Efficient Towing

ENCLOSED CHASSIS/UNDERCARRIAGE

Improves Fuel Efficiency Significantly, Improves Appearance, Allows for Much More Interior Storage Space, Better Insulation and Heated Holding Tanks. Corrosion Free Underbelly for Effortless Towing, Low Maintenance

AERODYNAMIC FRONT PROFILE

Less Wind Buffeting, More Stability

LAMINATED ALUMINUM FRAMED CONSTRUCTION

Superior Strength, Light Weight and Exceptional Durability

THICK WALL CONSTRUCTION

50% Thicker Than Most Other Light Weights, More Insulation, Much Stronger. 5 Year Warranty

FIBERGLASS EXTERIOR SKIN

Easy to Maintain, Resistant to Scratches, Dents and Dings

ENCLOSED LP BOTTLE AREA

Protects LP Bottles, Adds to Aerodynamics and Exterior Storage

EXTRA LOW CENTER OF GRAVITY

Stable, Safe Towing with Today's Down Sized Tow Vehicles

WORKS IN THE BASEMENT

Water Tank, Holding Tanks, and Heat Ducts Located Under Floor in the "Basement" Providing for Warm Floors, More Inside Storage Space, Low Center of Gravity

INDEPENDENT TORSION SUSPENSION SYSTEM W/RADIAL TIRES

Unsurpassed Towing Stability

RUBBER ROOF

Low Maintenance, "Next Generation" Product,

*12 Year Product Warranty

BOX CHANNEL, STEEL CHASSIS

Tougher, Stronger than Punched C-Channel. Powder Coated to Inhibit Corrosion and Improve Appearance.

JALOUSIE WINDOWS

Maximum Ventilation in all Types of Weather

*5 YEAR STRUCTURAL WARRANTY

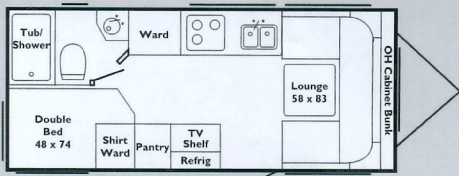
*DUCTED AIR CONDITIONING ON 8000-5000 SERIES

* Refer to specific written warranty statement.

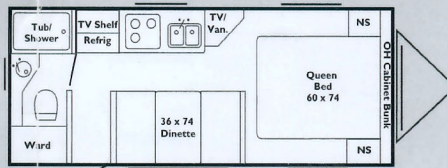
WWW.TRAIL-LITE.COM

7000 SERIES SUPER LITE WEIGHT, 7' WIDE TRAVEL TRAILERS CREATED SPECIFICALLY FOR TODAY'S MINI-VANS AND SPORT UTILITY VEHICLES

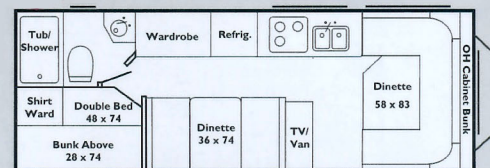
7211



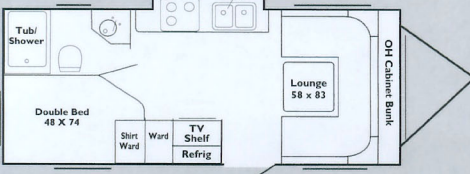
7230



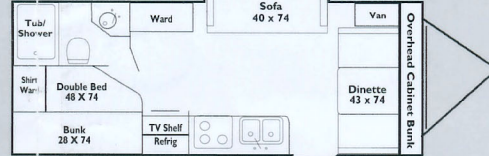
7253



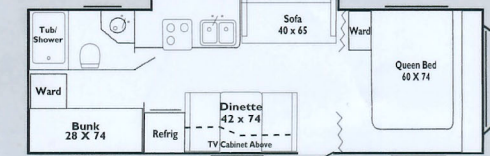
7211-S



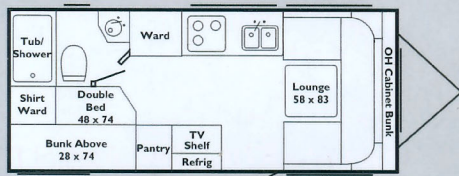
7233-S



7270-S



7212

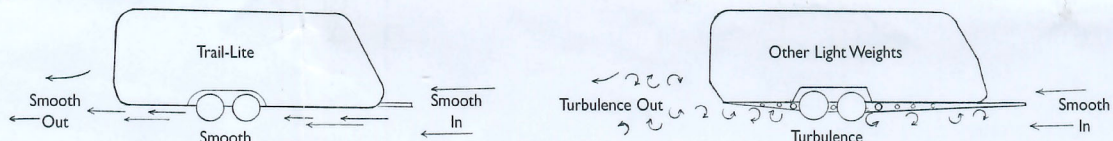
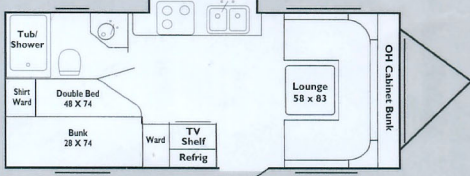


7000/8000/5000 SERIES CONSTRUCTION FEATURES

- Welded Aluminum Framed, Laminated Roof with 1 1/2" Polystyrene Block Foam Insulation (R-7)
7000 Series Only
- Welded Aluminum Framed, Laminated Floor with 1 1/2" Polystyrene Block Foam Insulation (R-7)
- High Impact ABS Front Cap
- Butyl Tape Sealant on Exterior Seams
- Rubber Roof
- Welded Aluminum Framed, Laminated Sidewalls with 1 1/2" Polystyrene Block Foam Insulation (R-7)

- Welded Aluminum Framed, Laminated Sidewalls with 1 1/2" Polystyrene Block Foam Insulation (R-7)
- Aluminum, Insulated Chassis Enclosure
- Fiberglass Exterior Skin
- Framed, Braced and Wired for A/C
- Under Floor Heat Ducts
- Welded Aluminum Framed, Laminated Roof with 3" Polystyrene Block Foam Insulation (R-13)
8000/5000 Series Only - Ducted for optional Air Conditioning

7212-S



Trail-Lite is the only super lightweight RV that uses modern race car technology to bring you towing ease and stability. Trail-Lite's enclosed chassis is clear of the exposed holding tanks, crossmembers and outriggers that create turbulence when the trailer is towed. Airflow is smooth and drag is greatly reduced. Towing a Trail-Lite is a breeze!

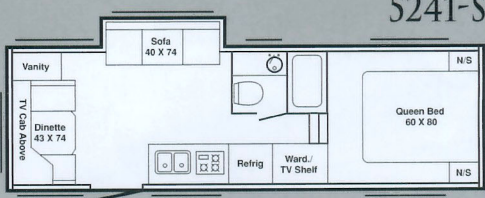
Specifications	7211	7211-S	7212	7212-S	7230	7233-S	7253	7270-S
Total Dry Weight	2960*	3290*	2970*	3300*	3162*	3462*	3380*	4120*
Load Capacity	1770	1505	1800	1500	1528	1278	1365	1935
Hitch Weight	370*	395*	370*	400*	290*	340*	345*	455*
Length	21'6"	21'6"	21'6"	21'6"	23'6"	23'6"	25'6"	28'5"
Exterior Width	7'3"	7'3"	7'3"	7'3"	7'3"	7'3"	7'3"	7'3"
Exterior Height (Roof Edge)	8'3"	8'3"	8'3"	8'3"	8'3"	8'3"	8'3"	8'3"
Fresh Water (Gal.)	30	30	30	30	30	30	30	30
Grey Water (Gal.)	30	30	30	30	30	30	30	30
Black Water (Gal.)	30	30	30	30	30	30	30	30
Tire Size	175/80 R13	175/80 R13	175/80 R13	175/80 R13	175/80 R13	175/80 R13	175/80 R13	185/80 R13

*Weights are approximate and based on standard features; optional equipment not included.

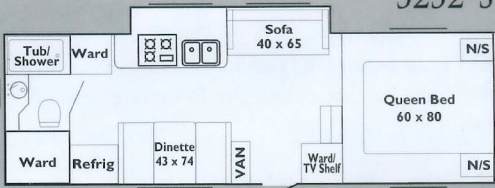
SLWHEELS

SUPER LITE WEIGHT, 8' WIDE FIFTH WHEELS
 THAT REMAIN LOW PROFILE, EVEN WITH BIG SLIDE-OUTS.
 TRUE CANDIDATES FOR LIGHT DUTY PICK-UP TRUCKS

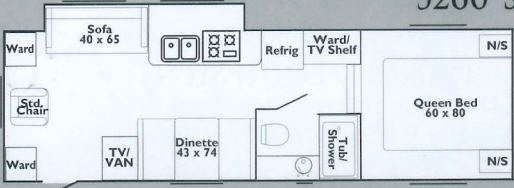
5241-S



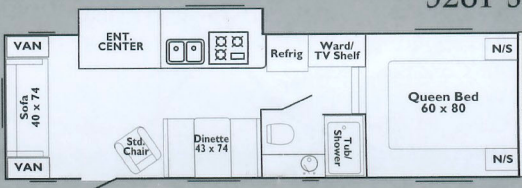
5252-S



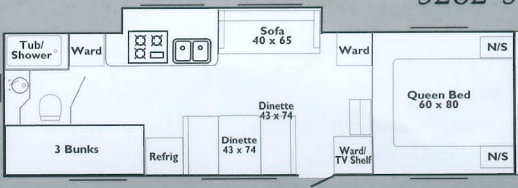
5260-S



5281-S

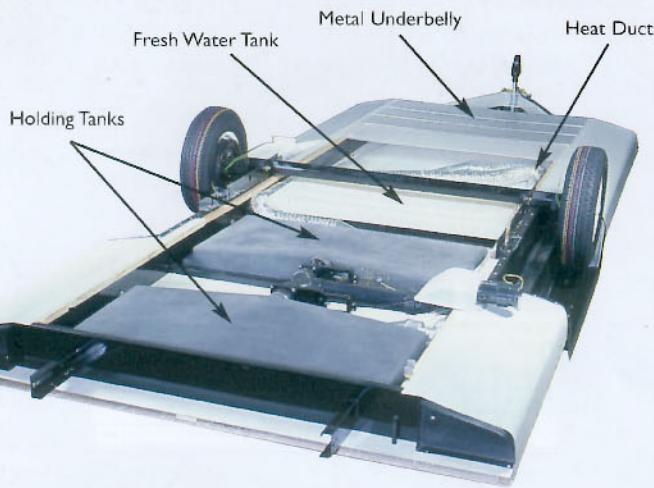


5282-S



5241-S	5252-S	5260-S	5281-S	5282-S
4660*	4739*	4954*	5043*	5080*
1895*	1574*	1535*	1526*	1341*
955*	713*	889*	969*	820*
24'6"	24'6"	27'6"	29'7"	29'7"
8'	8'	8'	8'	8'
9'5"	9'5"	9'5"	9'5"	9'5"
30	30	30	30	30
30	30	30	30	30
30	30	30	30	30
205/75	205/75	205/75	205/75	205/75
R14	R14	R14	R14	R14

ENCLOSED HEATED UNDERCARRIAGE



NOTE: Independent testing of our enclosed heated underbelly has produced the following results*

Outside Temperature	Avg. Temperature Inside Underbelly
15° F	37° F
0°	32.1° F

*Model tested was 8240. Results may vary by model.

APPLIANCES/EQUIPMENT

- Dometic Refrigerator, Flush Mount (2 door in 25' 7000, all 8000 & 5000)
- 3 burner Range Top
- Microwave Ready
- Power Range Hood w/Light
- Six Gallon Water Heater (DSI in 8000 & 5000)
- Furnace, 20,000 BTU (30,000 BTU in 8000 & 5000)
- Air Conditioner Ready
- Water Heater By-Pass Kit
- Demand Water Pump
- Laminated Galley Top w/Double Acrylic Sink and Euro Style Faucet
- Copper LP Gas Lines
- P.E.X. Water Lines
- Monitor Panel

BATH

- ABS Tub
- Shower Curtain w/Valance
- Thetford Toilet
- Medicine Cabinet w/Mirror
- Towel Bar, Toothbrush Holder and Tissue Holder
- Power Roof Vent

ELECTRICAL

- Patio Light w/Amber Lens
- Ceiling Lights w/Wall Switches
- 120 Volt GFI Protected Circuits
- 120 Volt Fuse Panel
- Outside 120 Volt Recept
- 30 AMP, 28' Power Cord
- 45 AMP, Whisper Quiet Converter w/Charger
- Battery Box w/Positive Ventilation
- Pre-wired for Air Conditioner
- Pre-wired for Microwave Oven

EXTERIOR

- Five Year Structural Warranty*
- Rubber Roof w/12 Year Warranty*
- Fiberglass Skin w/2 Year Warranty*
- Powder Coated Steel Chassis (Where Exposed to Elements)

* Refer to specific written warranty statement.

- Jalousie Windows (Most Windows)
- Aerodynamic Front Profile with High Impact ABS Cap
- Flush Mount Front Window/Awning
- 26" Entry Door(s) w/Radius Corners, Window, Screen Door, and Flush Mount Latch
- Locking Baggage Doors
- Self-Storing Step(s) (Powder Coated)
- Large Front Storage Compartment
- Enclosed 20# LP Tanks 7000 Series, 30# 8000 & 5000 Series
- 2⁵/₁₆" Coupler on Travel Trailers, 2" King Pin on Fifth Wheels
- Safety Chains (N/A on Fifth Wheels)
- Break-away Switch
- Enclosed, Heated Undercarriage
- Sewer Hose Compartment

INTERIOR

- Panoramic Galley Window
- Reversible Dinette Cushions
- Cabinet Bunk(s) Most "Seven" Models
- Valances, Tiebacks, Sheers, Designer Drapes
- Mini Blind at Galley
- Armstrong No-wax Vinyl Flooring
- Partial Carpet (8000 & 5000)
- "Euro Look" Overhead Cabinets w/Under Cabinet Shelves
- Oak Mortise and Tenon Cabinet Doors w/Struts
- Hidden Plumbing and Wiring
- High Pressure, Laminated Countertops w/Brass Trim
- Bedspread (with Double, Twin or Queen Bed)
- Headboard (with Double, Twin or Queen Bed)
- Light/Air Roof Vent(s)
- Fire Extinguisher, Smoke Detector, LP Detector

RUNNING GEAR

- Radial Trailer Tires
- White Spoke Wheels, with 10" Electric Brakes
- Independent Torsion Suspension System, Rubber Ride
- Seamless "Roto-Cast" Wheel Wells
- Welded, Box Channel, Tubular Steel Frame

OPTIONS

Approx. Wt.

- Air Conditioning, 13,500 BTU. 104#
- AM/FM CD Player 4#
- Awning, A & E 40-60#
- Swivel Rocker Chair 35#
- Microwave Oven 30#
- Convection Microwave Oven. 38#
- Oven 30#
- Spare Tire & Wheel 30# or 35#
- Stabilizer Jacks (four) 24#
- TV Antenna/Cable/Satellite Ready. 6#
- Roof Ladder. 10#
- Outside Grill 15#
- Outside Shower 3#
- Outside Sliding Drawer 36#
- DSI Water Heater. 1#
- Sink Cover 5#
- Stove Cover 5#
- Tub Surround. 10#

High Impact ABS Front Cap Creates Front Storage Compartment



SPECIFICATIONS